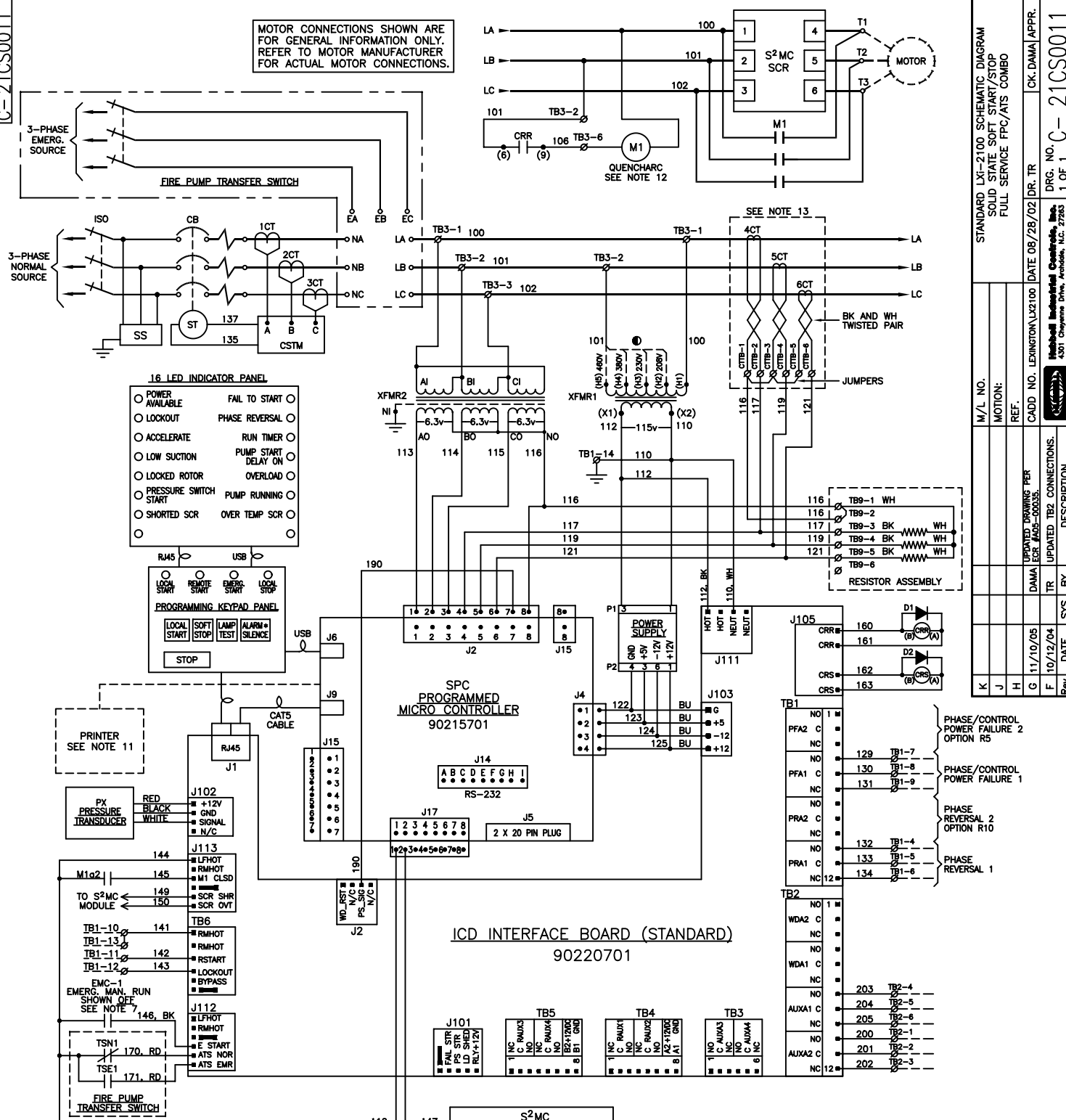


MOTOR CONNECTIONS SHOWN ARE FOR GENERAL INFORMATION ONLY. REFER TO MOTOR MANUFACTURER FOR ACTUAL MOTOR CONNECTIONS.



- NOTES:**
1. SCHEMATIC SHOWN IN A "NO POWER" STATE, NORMAL WATER PRESSURE APPLIED, CUSTOMER CONNECTIONS ARE SHOWN BY MEANS OF DASHED LINES.
 2. RELAY OUTPUT CONTACTS ARE RATED TO AMPS AT 120 VAC.
 3. M₁ CONTACTS CLOSE WHEN M IS CLOSED, M₂ CONTACTS CLOSE WHEN M IS OPEN.
 4. MINIMUM OF 12" CLEARANCE MUST BE MAINTAINED BETWEEN PUMP ROOM FLOOR AND CURRENT CARRYING OR LIVE PARTS.
 5. IF PHASE REVERSAL FAULT OCCURS WHEN PUMP ROTATION IS CORRECT, REVERSE WIRE NOS. 113 AND 114 ON THE J2 CONNECTOR LOCATED AT THE TOP OF SPC (FRONT) PC BOARD.
 6. EMC CONTACT IS A NORMALLY CLOSED CONTACT, HELD OPEN WHEN OFF.
 7. CONTROLLER SUITABLE FOR USE AS SERVICE EQUIPMENT.
 8. SR RELAY IS NORMALLY ENERGIZED, AND DROPS OUT ON STOP COMMAND.
 9. *10. NOT USED UNLESS AUDIBLE ALARM IS SUPPLIED.
 11. SHOWN FOR REFERENCE ONLY. USED WHEN SUPPLIED.
 12. ARC QUENCHER IS CONNECTED ACROSS COIL M1.
 13. CT ASSEMBLY MOUNTED ON FIRE PUMP TRANSFER SWITCH.

REFERENCE DRAWINGS:
 FOR AUTOMATIC TRANSFER SWITCH SCHEMATIC DIAGRAM, SEE DWG. 45CS0011.
 FOR FIRE PUMP CONTROLLER FIELD CONNECTIONS, SEE DWG. 21CF0011.
 ● - CONNECT PRIMARY TAP PER LINE VOLTAGE

SYMBOL	DESCRIPTION
1-6CT	CURRENT TRANSFORMER
CB	CIRCUIT BREAKER
CRR	MOTOR CONTACTOR RELAY
CRS	PUMP START RELAY
D1,D2	FLY-BACK DIODE
EMC-1	EMERGENCY MANUAL CONTACT
ISO	ISOLATING DISCONNECT NORMAL
M1	CONTACTOR
M1a,b	AUXILIARY CONTACTS
PX	PRESSURE TRANSDUCER
S ² MC	SOLID-STATE SOFT START CONTROL
SR	STOP RELAY 12VDC
SS	SURGE SUPPRESSOR
ST	SHUNT TRIP
TB1-6	TERMINAL PLUG, BOARD MOUNTED
TB12,3,9	TERMINAL BLOCKS
XFMR1	CONTROL TRANSFORMER
XFMR2	THREE PHASE TRANSFORMER

M/L NO.	DESCRIPTION	Rev.	DATE	BY	SY
K					
J					
H					
G	UPDATED DRAWING PER DAMA EGR #405-00035.		11/10/05		
F	UPDATED TB2 CONNECTIONS.		10/12/04		
E					
D					
C					
B					
A					

STANDARD LXI-2100 SCHEMATIC DIAGRAM
 SOLID STATE SOFT START/STOP
 FULL SERVICE FPC/ATS COMBO

DATE: 08/28/02 DR. TR
 CK. DAMA/APP.
 DRG. NO. C-21CS0011
 1 OF 1
 Hubbell Industrial Controls, Inc.
 4301 Chayenne Dr., Archdale, N.C. 27283